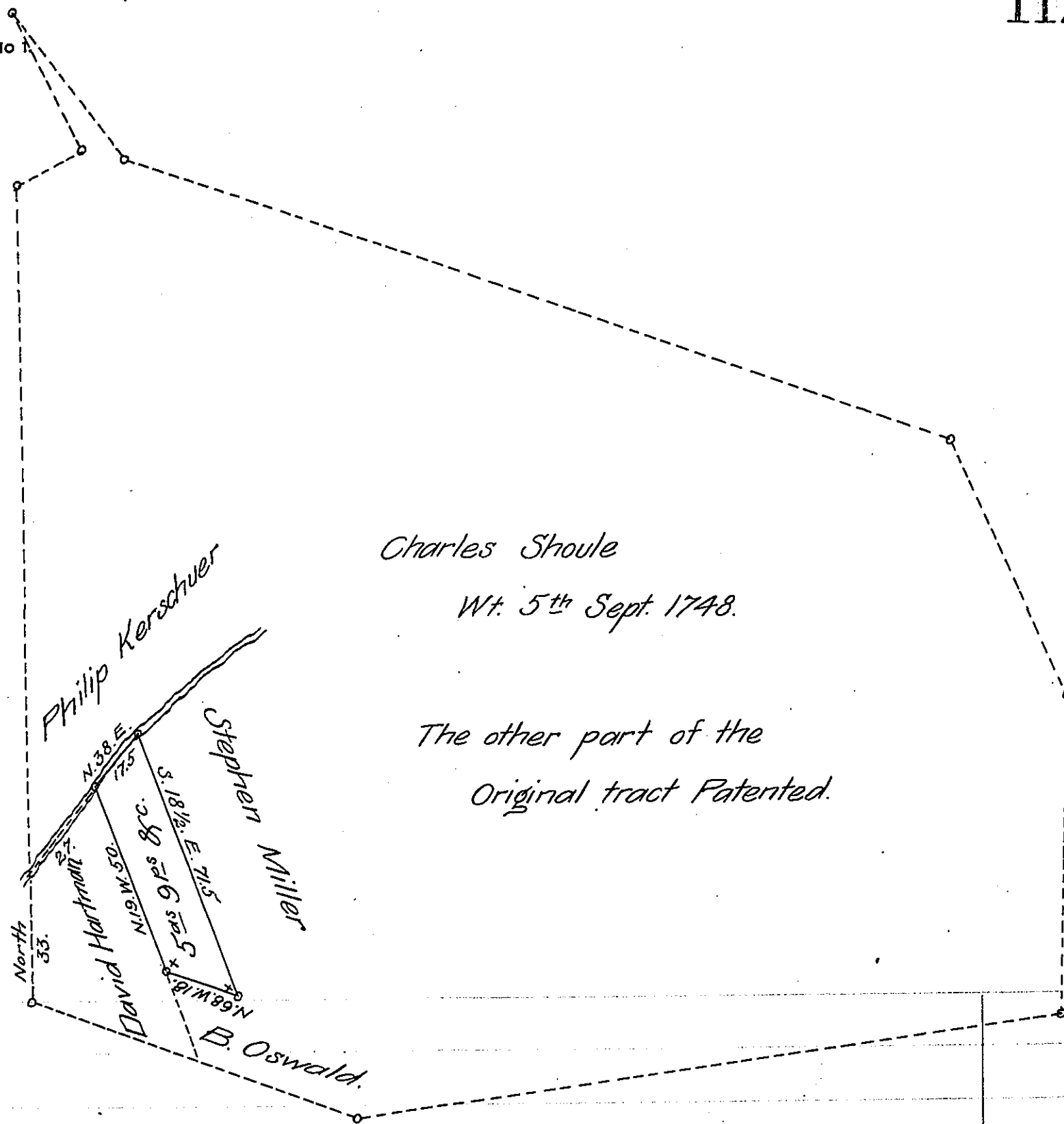


FORM NO



Charles Shoule

Wt. 5th Sept. 1748.

The other part of the
Original tract Patented.

Draft of a tract of land situate in Lynn township, Lehigh County, Containing 5^{as} 9^{ps} and allowance of six per cent. for roads, &c. Being a part of a larger tract of 293^{as} 113^{ps} and allowance of six per cent. for roads &c. originally surveyed in pursuance of a warrant granted to Charles Shoule dated Sept. 5th A.D. 1748. The above now returned as the property of Benjamin Reitz.

Geo. Blank C.S.

To R.B. Beath Esq. }
Surzor General }

IN TESTIMONY that the above is a copy of the original remaining on file in the Department of Internal Affairs of Pennsylvania, made conformably to an Act of Assembly approved the 16th day of February, 1833, I have hereunto set my Hand and caused the Seal of said Department to be affixed at Harrisburg, this twenty fifth day of March 1907.

Geo. B. Johnson
Secretary of Internal Affairs.